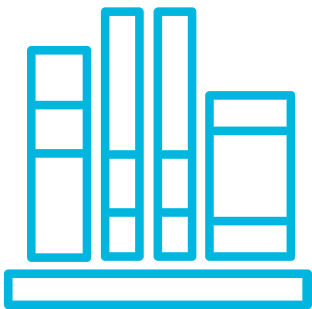


openEHR Clinical Decision Support

Welcome to study the openEHR Clinical Decision Support Course!

The course has been prepared in co-operation between Rosaldo Oy and Jimmy Axelsson and Rong Chen from Cambio CDS AB. Jimmy has been responsible for preparing the Course materials and is also acting as the facilitator on this course.



If you study this Course together with a team, active communication with the other participants as well as with the facilitator is encouraged during your study. Chatting, commenting and asking questions will help you digest and analyze the topics from several viewpoints. If you study this Course alone, you have the chance to address your comments and questions to the facilitator and to receive answers during the Course.

You can also receive a certificate for completion of the Course.

This course familiarizes you with the concept of clinical decision support (CDS) and teaches you how to build clinical decision support applications using openEHR data models. During the Course you will learn basic clinical modelling and how to create CDS applications with the help of low code tools. You also get a unique opportunity to acquire practical modelling skills through creating and testing your own CDS module. After finishing the course you will have a fundamental understanding of clinical decision support, know how to create basic CDS modules using GDL2 Editor and understand the general process behind developing production grade CDS solutions on a high level.



TRAINING CONTENT

The training is instructed as follows:

The Course is structured in 5 parts:

Part 1 Introduction to the Course.

Part 2 Clinical Decision Support discusses Clinical Decision Support concept in general.

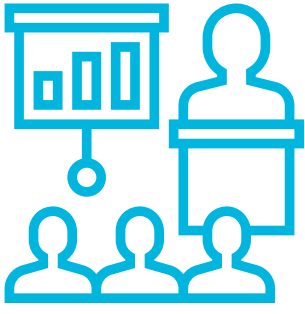
Part 3 Clinical modelling focuses on practical work with GDL2 editor. In this part you learn how to use GDL2 Editor and get hands-on guidance on how to create and test your own CDS solution.

Part 4 Production grade Clinical Decision Support is about utilizing CDS Studio and CDS Portal products from Cambio to build production grade clinical decision support solutions. This part will also give a high-level understanding on how to create CE-marked CDS solutions.

Part 5 Takeaways from the Course.



openEHR Clinical Decision Support

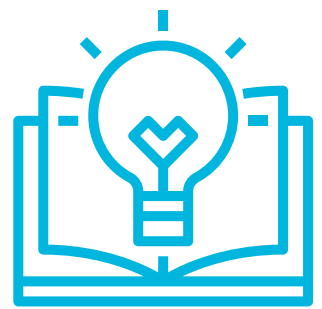


Part 1: Introduction

The content of the Course and the facilitator are introduced in this part. You will also find general instructions regarding navigation and active participation in the Claned eLearning environment.

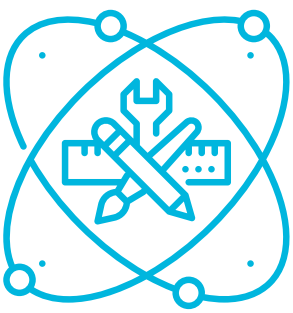
Part 2: Clinical Decision Support

This part introduces you to the concept of clinical decision support. You learn about the concept of clinical decision support and what problems it was designed to solve. We talk about the basics of how clinical decision support systems function and about different types of clinical decision support. We show you real-world examples and use cases for both CDS services and CDS applications. The basics of openEHR Guideline Definition Language (GDL) are also discussed as you will be using it in practical modelling work.



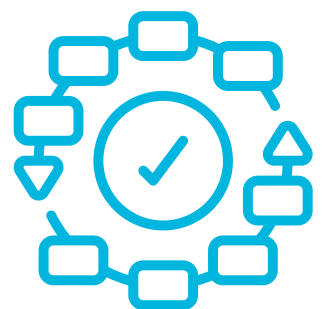
Part 3: Clinical modelling

In this part you get hands-on training on the use of GDL2 Editor and you will learn how to create basic CDS modules that can execute clinical rules. These CDS modules are based on open standards with excellent support for interoperability and translations to other natural languages by default. During this part you learn how to use the GDL2 Editor and get hands-on experience on creating and testing your own CDS Solution. We also introduce you to such additional GDL features that were not covered in the hands-on tutorial.



Part 4: Production grade clinical decision support

In this part we give you insight to how industry-strength CE-marked clinical decision support products are designed and created. You are introduced to CDS Studio and CDS Portal products and get a practical demonstration on how to use them. You are also educated about the CE-marking requirements for applications and learn how to create a CE-marked production grade CDS solution.



openEHR Clinical Decision Support

Part 5: Takeaways from the Course

This part concludes the most important takeaways from the training. As mentioned, you can also get a certificate of completion!

